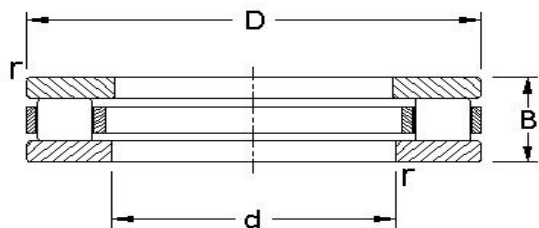
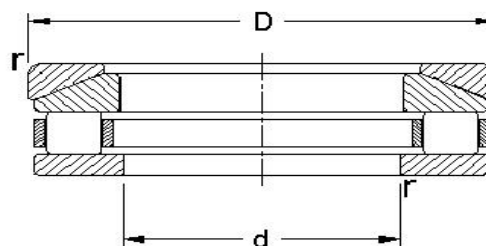


# Thrust cylindrical roller bearings

Inch series



**T**

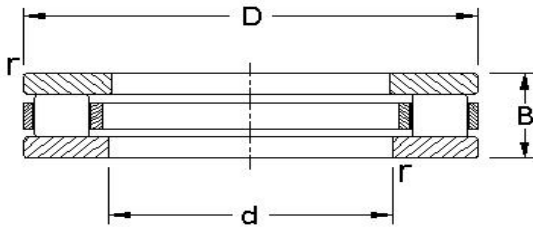


**AT**

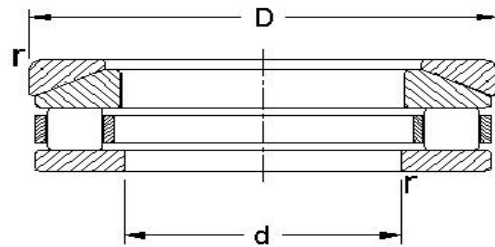
d mm	Dimensions			Load ratings		Designation
	D	B	r	Dynamic C N	Static Co	
25.4	53.975	20.6248	0.8	44500	38100	<b>T 601</b>
	57.15	26.9748	0.8	44500	38100	<b>AT 601</b>
26.974	53.975	20.6248	0.8	44500	38100	<b>T 602</b>
	57.15	26.9748	0.8	44500	38100	<b>AT 602</b>
28.575	57.15	20.6248	0.8	51200	52100	<b>T 603</b>
	60.325	26.9748	0.8	51200	52100	<b>AT 603</b>
30.149	57.15	20.6248	0.8	51200	52100	<b>T 604</b>
	60.325	26.9748	0.8	51200	52100	<b>AT 604</b>
31.75	60.325	20.6248	0.8	56500	57800	<b>T 605</b>
	63.5	26.9748	0.8	56500	57800	<b>AT 605</b>
33.324	60.325	20.6248	0.8	56500	57800	<b>T 606</b>
	63.5	26.9748	0.8	56500	57800	<b>AT 606</b>
34.925	73.025	20.6248	0.8	69400	96100	<b>T 607</b>
	76.2	26.9748	0.8	69400	96100	<b>AT 607</b>
36.499	73.025	20.6248	0.8	69400	96100	<b>T 608</b>
	76.2	26.9748	0.8	69400	96100	<b>AT 608</b>
38.1	76.2	20.6248	0.8	75200	105000	<b>T 609</b>
	79.375	26.9748	0.8	75200	105000	<b>AT 609</b>
39.674	76.2	20.6248	0.8	75200	105000	<b>T 610</b>
	79.375	26.9748	0.8	75200	105000	<b>AT 610</b>
41.275	82.55	25.4	1.6	109000	136000	<b>T 611</b>
	85.725	33.3248	1.6	109000	136000	<b>AT 611</b>
42849	82.55	25.4	1.6	109000	136000	<b>T 612</b>
	85.725	33.3248	1.6	109000	136000	<b>AT 612</b>
44.45	85.725	25.4	1.6	118500	150000	<b>T 613</b>
	88.9	33.3248	1.6	118500	150000	<b>AT 613</b>
46.024	85.725	25.4	1.6	118500	150000	<b>T 614</b>
	88.9	33.3248	1.6	118500	150000	<b>AT 614</b>
47.625	88.9	25.4	1.6	118500	150000	<b>T 615</b>

# Thrust cylindrical roller bearings

Inch series



**T**



**AT**

d mm	Dimensions			Load ratings		Designation
	D	B	r	Dynamic C N	Static Co	
	92.075	33.3248	1.6	118500	150000	<b>AT 615</b>
49.199	88.9	25.4	1.6	118500	150000	<b>T 616</b>
	92.075	33.3248	1.6	118500	150000	<b>AT 616</b>
50.8	92.075	25.4	1.6	118500	150000	<b>T 617</b>
	95.25	33.3248	1.6	118500	150000	<b>AT 617</b>
53.975	95.25	25.4	1.6	128000	164000	<b>T 618</b>
	98.425	33.3248	1.6	128000	164000	<b>AT 618</b>
57.15	98.425	25.4	1.6	137000	178000	<b>T 619</b>
	101.6	33.3248	1.6	137000	178000	<b>AT 619</b>
60.325	101.6	25.4	1.6	142000	178000	<b>T 620</b>
	104.775	33.3248	1.6	142000	178000	<b>AT 620</b>
63.5	104.775	25.4	1.6	148000	191000	<b>T 621</b>
	107.95	33.3248	1.6	148000	191000	<b>AT 621</b>
66.675	110.3122	25.4	1.6	165000	205000	<b>T 622</b>
	115.062	33.3248	1.6	165000	205000	<b>AT 622</b>
69.85	113.4872	25.4	1.6	144000	218000	<b>T 623</b>
	118.237	33.3248	1.6	144000	218000	<b>AT 623</b>
76.2	119.837	25.4	1.6	178000	232000	<b>T 624</b>
	126.187	33.3248	1.6	178000	232000	<b>AT 624</b>
82.55	126.1872	25.4	1.6	174000	232000	<b>T 625</b>
	132.5372	33.3248	1.6	174000	232000	<b>AT 625</b>
88.9	132.537	25.4	1.6	183000	245000	<b>T 626</b>
	138.8872	33.3248	1.6	183000	245000	<b>AT 626</b>