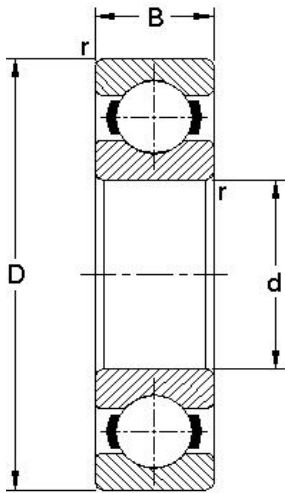
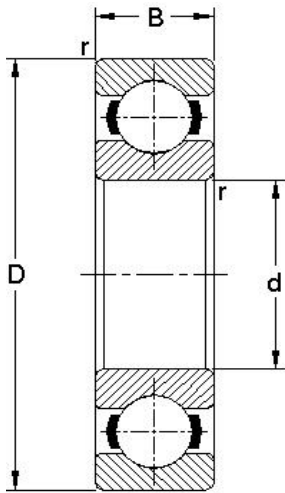


Deep groove ball bearings single row
Inch series



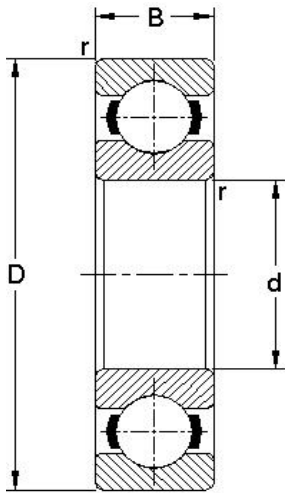
Dimensions				Load ratings		Designation	M
d	D	B	r	Dynamic C	Static Co		
mm				N			
12.7	33.3375	9.525	0.8	6950	3030	RLS 4	
	41.275	15.875	1.6	12100	5600	RMS 4	
15.875	39.6875	11.1125	0.8	10900	5000	RLS 5	
	46.0375	15.875	1.6	12600	5600	RMS 5	
19.05	47.625	14.2875	1.6	14200	6550	RLS 6	
	50.8	17.4625	1.6	16500	7800	RMS 6	
22.225	50.8	14.2875	1.6	14400	6550	RLS 7	
	57.15	17.4625	1.6	19200	9150	RMS 7	
25.4	57.15	15.875	1.6	18600	8900	RLS 8	
	63.5	19.05	2.4	22100	10600	RMS 8	
28.575	63.5	15.875	1.6	20200	10000	RLS 9	
	71.4375	20.6375	2.4	30800	15800	RMS 9	
31.75	69.85	17.4625	1.6	27700	13900	RLS 10	
	79.375	22.225	2.4	37700	19500	RMS 10	
34.925	65.0875	14.2875	1.6	16600	8500	XLJ 1.3/8	
	76.2	17.4625	1.6	30200	15700	RLS 11	
	88.9	22.225	2.4	45300	23900	RMS 11	
38.1	68.262	14.2875	1.6	14300	7500	XLJ 1.1/2	
	82.55	19.05	2.4	34800	17800	RLS 12	
	95.25	23.8125	2.4	49500	26200	RMS 12	
41.275	73.025	14.2875	1.6	14900	8150	XLJ 1.5/8	
	88.9	19.05	2.4	38700	20000	RLS 13	
	101.6	23.8125	2.4	55000	29900	RMS 13	
44.45	76.2	14.2875	1.6	21800	12200	XLJ 1.3/4	
	95.25	20.6375	2.4	42700	22300	RLS 14	
	107.95	26.9875	2.4	59500	32700	RMS 14	
47.625	80.9625	15.875	1.6	22700	13100	XLJ 1.7/8	

Deep groove ball bearings single row
Inch series



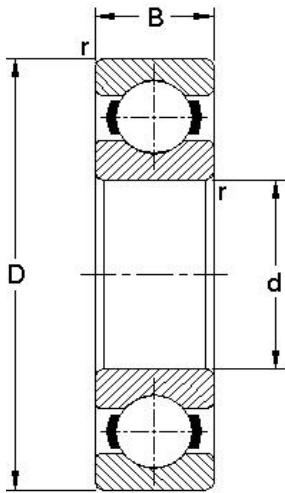
Dimensions				Load ratings		Designation	M
d	D	B	r	Dynamic C	Static Co		
mm				N			
	101.6	20.6375	2.4	50500	27800	RLS 15	
	114.3	26.9875	2.4	69000	38700	RMS 15	
50.8	84.138	15.875	1.6	22700	13100	XLJ 2	
	101.6	20.6375	2.4	50500	27800	RLS 16	
	114.3	26.9875	2.4	69000	38700	RMS 16	
57.15	90.4875	15.875	1.6	29400	17000	XLJ 2.1/4	
	114.3	22.225	2.4	60000	32700	RLS 18	
	127	31.75	3.2	85000	48500	RMS 18	
60.325	95.25	17.4625	1.6	29600	18500	XLJ 2.3/8	
63.5	98.425	17.4625	1.6	31800	19600	XLJ 2.1/2	
	127	23.8125	2.4	65500	36800	RLS 20	
	139.7	31.75	3.2	96500	55500	RMS 20	
69.85	104.775	17.4625	1.6	24500	15900	XLJ 2.3/4	
	133.35	23.8125	2.4	70000	40900	RLS 22	
	158.75	34.925	3.2	118000	71500	RMS 22	
76.2	114.3	19.05	2.4	41100	26100	XLJ 3	*
	146.05	26.988	2.4	81500	48300	RLS 24	*
	177.8	39.6875	4	138000	89500	RMS 24	
82.55	120.65	19.05	2.4	30500	21200	XLJ 3.1/4	
	152.4	26.9875	2.4	87500	52500	RLS 26	*
	190.5	39.6875	4	139000	89500	RMS 26	*
85.725	190.5	39.6875	4	139000	89500	RMS 27	*
88.9	127	19.05	2.4	34100	23500	XLJ 3.1/2	*
	165.1	28.575	3.2	100000	60500	RLS 28	
	206.375	44.45	4	169000	120000	RMS 28	
95.25	133.35	19.05	2.4	40600	28800	XLJ 3.3/4	*
	171.45	28.575	3.2	106000	66500	RLS 30	

Deep groove ball bearings single row
Inch series



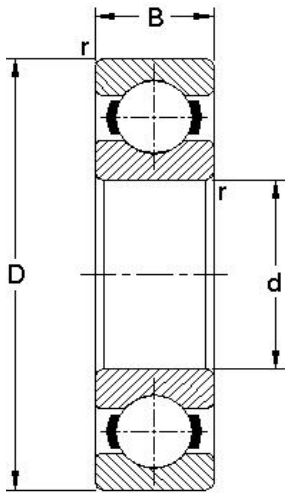
Dimensions				Load ratings		Designation	M
d mm	D	B	r	Dynamic C N	Static Co		
	209.55	44.45	4	169000	120000	RMS 30	
101.6	142.875	22.225	2.4	41400	30300	XLJ 4	*
	184.15	31.75	3.2	120000	74500	RLS 32	
	215.9	44.45	4	170000	120000	RMS 32	
107.95	152.4	22.225	2.4	48400	36500	XLJ 4.1/4	*
	190.5	31.75	3.2	127000	81500	RLS 34	
	222.25	44.45	4.8	171000	120000	RMS 34	
114.3	158.75	22.225	2.4	55500	40200	XLJ 4.1/2	
	203.2	33.3375	3.2	147000	98500	RLS 36	*
	238.125	50.8	4.8	203000	155000	RMS 36	
120.65	165.1	22.225	2.4	57000	42400	XLJ 4.3/4	
	209.55	33.3375	3.2	134000	87000	RLS 38	
	254	50.8	4.8	209000	160000	RMS 38	
123.825	177.8	25.4	2.4	60000	45500	XLJ 4.7/8	
127	177.8	25.4	2.4	68000	50000	XLJ 5	
	228.6	34.925	3.2	154000	107000	RLS 40	
	254	50.8	4.8	209000	160000	RMS 40	
133.35	184.15	25.4	2.4	51000	39600	XLJ 5.1/4	
139.7	190.5	25.4	2.4	57000	47500	XLJ 5.1/2	
	241.3	34.925	3.2	153000	107000	RLS 44	
	279.4	50.8	4.8	221000	174000	RMS 44	*
146.05	196.85	25.4	2.4	53500	43500	XLJ 5.3/4	
152.4	203.2	25.4	2.4	54500	45500	XLJ 6	*
	266.7	39.6875	4	180000	134000	RLS 48	
	304.8	57.15	4.8	259000	218000	RMS 48	
165.1	222.25	28.575	3.2	66000	55000	XLJ 6.1/2	*
	279.4	39.6875	4	188000	145000	RLS 52	

Deep groove ball bearings single row
Inch series



Dimensions				Load ratings		Designation	M
d mm	D	B	r	Dynamic C N	Static Co		
	330.2	63.5	4.8	286000	251000	RMS 52	
171.45	228.6	28.575	3.2	70000	60000	XLJ 6.3/4	*
177.8	241.3	31.75	3.2	77500	65000	XLJ 7	*
	304.8	44.45	4	221000	180000	RLS 56	*
	342.9	63.5	4.8	306000	278000	RMS 56	*
184.15	247.65	31.75	3.2	79500	67000	XLJ 7.1/4	
190.5	254	31.75	3.2	79000	68000	XLJ 7.1/2	*
	317.5	44.45	4	231000	195000	RLS 60	*
	368.3	69.85	4.8	340000	322000	RMS 60	*
203.2	273.05	34.925	3.2	94500	82500	XLJ 8	*
	330.2	44.45	4	230000	195000	RLS 64	*
	381	69.85	4.8	366000	358000	RMS 64	*
215.9	292.1	38.1	3.2	108000	95500	XLJ 8.1/2	*
	355.6	50.8	4.8	263000	232000	RLS 68	*
	406.4	76.2	4.8	396000	401000	RMS 68	*
228.6	304.8	38.1	3.2	110000	98000	XLJ 9	*
	368.3	50.8	4.8	275000	251000	RLS 72	*
	431.8	76.2	4.8	415000	445000	RMS 72	*
241.3	323.85	41.275	4	127000	115000	XLJ 9.1/2	*
	384.175	50.8	4.8	287000	271000	RLS 76	*
254	336.55	41.275	4	130000	120000	XLJ 10	*
	400.05	50.8	4.8	285000	271000	RLS 80	*
	469.9	82.55	4.8	455000	490000	RMS 80	*
266.7	355.6	44.45	4	145000	133000	XLJ 10.1/2	*
	422.275	57.15	4.8	338000	339000	RLS 84	*
279.4	368.3	44.45	4	148000	139000	XLJ 11	*
	444.5	57.15	4.8	335000	339000	RLS 88	*

Deep groove ball bearings single row
Inch series



Dimensions				Load ratings		Designation	M
d	D	B	r	Dynamic C	Static Co		
mm				N			
	508	88.9	4.8	540000	623000	RMS 88	*
292.1	387.35	47.625	4	169000	160000	XLJ 11.1/2	*
	457.2	60.325	4.8	371000	390000	RLS 92	*
304.8	406.4	50.8	4.8	190000	182000	XLJ 12	*
	469.9	66.675	4.8	388000	412000	RLS 96	*
	546.1	95.25	4.8	557000	654000	RMS 96	*
317.5	419.1	50.8	4.8	195000	183000	XLJ 12.1/2	*
	482.6	66.675	4.8	405000	444000	RLS 100	*
330.2	444.5	57.15	4.8	218000	221000	XLJ 13	*
	508	69.85	4.8	420000	466000	RLS 104	*
342.9	457.2	57.15	4.8	235000	240000	XLJ 13.1/2	*
	527.05	69.85	4.8	438000	494000	RLS 108	*
355.6	469.9	57.15	4.8	255000	245000	XLJ 14	*
	546.1	73.025	4.8	455000	525000	RLS 112	*
368.3	495.3	63.5	4.8	299000	328000	XLJ 14.1/2	*
	558.8	76.2	4.8	476000	562000	RLS 116	*
381	508	63.5	4.8	297000	328000	XLJ 15	*
	571.5	76.2	4.8	474000	562000	RLS 120	*
406.4	546.1	69.85	4.8	323000	375000	XLJ 16	*
	603.25	82.55	4.8	511000	627000	RLS 128	*
431.8	571.8	69.85	4.8	329000	393000	XLJ 17	*
457.2	609.6	76.2	4.8	360000	435000	XLJ 18	*
482.6	647.7	82.55	4.8	410000	521000	XLJ 19	*