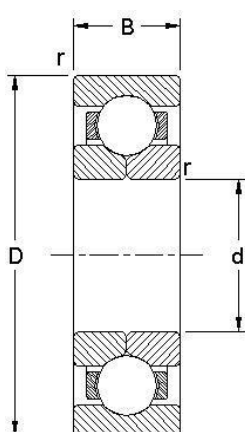
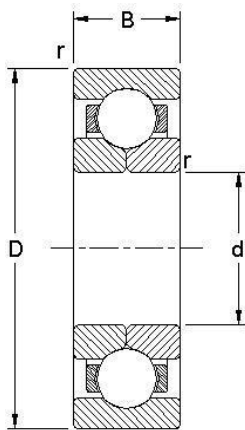


## Four point contact ball bearings



d mm	Dimensions			Load ratings		Designation	M
	D	B	r	Dynamic C N	Static Co		
20	52	15	1.1	29600	20000	<b>QJ 304</b>	*
25	52	15	1	25100	20000	<b>QJ 205</b>	*
30	62	16	1	35100	28500	<b>QJ 206</b>	*
	72	19	1.1	49400	39000	<b>QJ 306</b>	*
35	72	17	1.1	46200	39000	<b>QJ 207</b>	*
	80	21	1.5	59200	46500	<b>QJ 307</b>	*
40	80	18	1.1	52700	45000	<b>QJ 208</b>	*
	90	23	1.5	71500	58500	<b>QJ 308</b>	*
45	85	19	1.1	58500	51000	<b>QJ 209</b>	*
	100	25	1.5	93600	76500	<b>QJ 309</b>	*
50	90	20	1.1	61800	56000	<b>QJ 210</b>	*
	110	27	2	111000	91500	<b>QJ 310</b>	*
55	100	21	1.5	79300	76500	<b>QJ 211</b>	*
	120	29	2	127000	108000	<b>QJ 311</b>	*
60	110	22	1.5	92300	86500	<b>QJ 212</b>	*
	130	31	2.1	146000	125000	<b>QJ 312</b>	*
65	120	23	1.5	104000	104000	<b>QJ 213</b>	*
	140	33	2.1	165000	146000	<b>QJ 313</b>	*
70	125	24	1.5	114000	114000	<b>QJ 214</b>	*
	150	35	2.1	186000	166000	<b>QJ 314</b>	*
75	130	25	1.5	117000	122000	<b>QJ 215</b>	*
	160	37	2.1	199000	186000	<b>QJ 315</b>	*
80	140	26	2	138000	146000	<b>QJ 216</b>	*
	170	39	2.1	216000	208000	<b>QJ 316</b>	*
85	150	28	2	148000	160000	<b>QJ 217</b>	*
	180	41	3	234000	236000	<b>QJ 317</b>	*
90	160	30	2	174000	186000	<b>QJ 218</b>	*
	190	43	3	265000	285000	<b>QJ 318</b>	*

## Four point contact ball bearings



d mm	Dimensions		r	Load ratings		Designation	M
	D	B		Dynamic C N	Static Co		
95	170	32	2.1	199000	212000	<b>QJ 219</b>	*
	200	45	3	286000	315000	<b>QJ 319</b>	*
100	180	34	2.1	225000	240000	<b>QJ 220</b>	*
	215	47	3	307000	340000	<b>QJ 320</b>	*
110	200	38	2.1	265000	305000	<b>QJ 222</b>	*
	240	50	3	364000	430000	<b>QJ 322</b>	*
120	215	40	2.1	286000	340000	<b>QJ 224</b>	*
	260	55	3	390000	490000	<b>QJ 324</b>	*
130	230	40	3	296000	365000	<b>QJ 226</b>	*
	280	58	4	423000	560000	<b>QJ 326</b>	*
140	250	42	3	325000	440000	<b>QJ 228</b>	*
	300	62	4	468000	640000	<b>QJ 328</b>	*
150	270	45	3	338000	465000	<b>QJ 230</b>	*
	320	65	4	494000	710000	<b>QJ 330</b>	*
160	290	48	3	390000	570000	<b>QJ 232</b>	*
170	310	52	4	397000	600000	<b>QJ 234</b>	*
	360	72	4	618000	965000	<b>QJ 334</b>	*
180	320	52	4	436000	680000	<b>QJ 236</b>	*
	380	75	4	637000	1020000	<b>QJ 336</b>	*
200	360	58	4	507000	850000	<b>QJ 240</b>	*
220	400	65	4	553000	980000	<b>QJ 244</b>	*