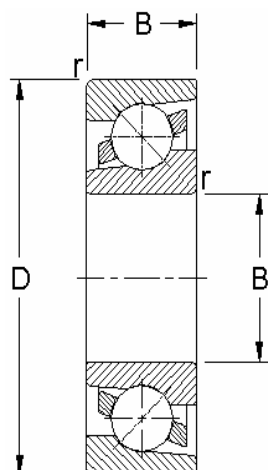


# Angular contact ball bearings single row

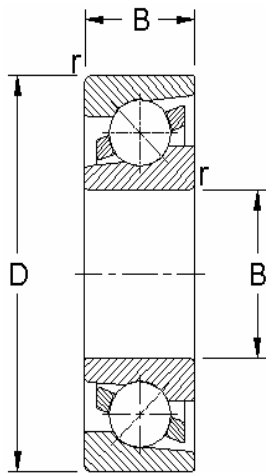
Metric series



d mm	Dimensions		r	r1	Load ratings		Designation	B	BG	BMG
	D	B			Dynamic C N	Static Co				
15	35	11	0.6	0.3	8840	4800	<b>7202</b>	*	*	*
	42	13	1	0.6	13000	6700	<b>7302</b>	*	*	*
17	40	12	0.6	0.6	11100	6100	<b>7203</b>	*	*	*
	47	14	1	0.6	15900	8300	<b>7303</b>	*	*	*
20	47	14	1	0.6	14000	8300	<b>7204</b>	*	*	*
	52	15	1.1	0.6	19000	10400	<b>7304</b>	*	*	*
	72	19	1.1	0.6	35600	19100	<b>7404</b>	*	*	*
25	52	15	1	0.6	15600	10200	<b>7205</b>	*	*	*
	62	17	1.1	0.6	26000	15600	<b>7305</b>	*	*	*
	80	21	1.5	1	39700	23200	<b>7405</b>	*	*	*
30	62	16	1	0.6	23800	15600	<b>7206</b>	*	*	*
	72	19	1.1	0.6	34500	21200	<b>7306</b>	*	*	*
	90	23	1.5	1	47600	28400	<b>7406</b>	*	*	*
35	72	17	1.1	0.6	30700	20800	<b>7207</b>	*	*	*
	80	21	1.5	1	39000	24500	<b>7307</b>	*	*	*
	100	25	1.5	1	60400	37000	<b>7407</b>	*	*	*
40	80	18	1.1	0.6	36400	26000	<b>7208</b>	*	*	*
	90	23	1.5	1	49400	33500	<b>7308</b>	*	*	*
	110	27	2	1	69900	43500	<b>7408</b>	*	*	*
45	85	19	1.1	0.6	37700	28000	<b>7209</b>	*	*	*
	100	25	1.5	1	60500	41500	<b>7309</b>	*	*	*
	120	29	2	1	84900	53800	<b>7409</b>	*	*	*
50	90	20	1.1	0.6	39000	30500	<b>7210</b>	*	*	*
	110	27	2	1	74100	51000	<b>7310</b>	*	*	*
	130	31	2.1	1.1	97400	65300	<b>7410</b>	*	*	*
55	100	21	1.5	1	48800	38000	<b>7211</b>	*	*	*
	120	29	2	1	85200	60000	<b>7311</b>	*	*	*
	140	33	2.1	1.1	118000	82400	<b>7411</b>	*	*	*

# Angular contact ball bearings single row

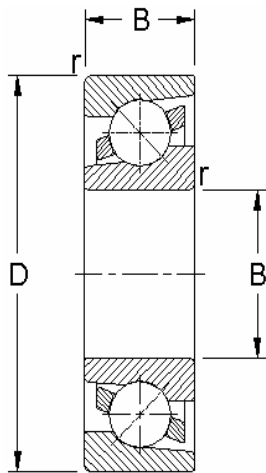
Metric series



d mm	Dimensions		r	r1	Load ratings		Designation	B	BG	BMG
	D	B			Dynamic C N	Static Co				
60	110	22	1.5	1	57200	45500	<b>7212</b>	*	*	*
	130	31	2.1	1.1	95600	69500	<b>7312</b>	*	*	*
	150	35	2.1	1.1	129000	93600	<b>7412</b>	*	*	*
65	120	23	1.5	1	66300	54000	<b>7213</b>	*	*	*
	140	33	2.1	1.1	108000	80000	<b>7313</b>	*	*	*
	160	37	2.1	1.1	139000	104000	<b>7413</b>	*	*	*
70	125	24	1.5	1	71500	60000	<b>7214</b>	*	*	*
	150	35	2.1	1.1	119000	90000	<b>7314</b>	*	*	*
	180	42	3	1.1	149000	115000	<b>7414</b>	*	*	*
75	130	25	1.5	1	72800	64000	<b>7215</b>	*	*	*
	160	37	2.1	1.1	133000	106000	<b>7315</b>	*	*	*
	190	45	3	1.1	171000	141000	<b>7415</b>	*	*	*
80	140	26	2	1	83200	73500	<b>7216</b>	*	*	*
	170	39	2.1	1.1	143000	118000	<b>7316</b>	*	*	*
	200	48	3	1.1	193000	166000	<b>7416</b>	*	*	*
85	150	28	2	1	95600	83000	<b>7217</b>	*	*	*
	180	41	3	1.1	153000	132000	<b>7317</b>	*	*	*
	210	52	4	1.5	204000	180000	<b>7417</b>	*	*	*
90	160	30	2	1	108000	96500	<b>7218</b>	*	*	*
	190	43	3	1.1	165000	146000	<b>7318</b>	*	*	*
	225	54	4	1.5	216000	196000	<b>7418</b>	*	*	*
95	170	32	2.1	1.1	124000	108000	<b>7219</b>	*	*	*
	200	45	3	1.1	178000	163000	<b>7319</b>	*	*	*
100	180	34	2.1	1.1	135000	122000	<b>7220</b>	*	*	*
	215	47	3	1.1	203000	190000	<b>7320</b>	*	*	*
105	190	36	2.1	1.1	148000	137000	<b>7221</b>	*	*	*
	225	49	3	1.1	212000	208000	<b>7321</b>	*	*	*
110	200	38	2.1	1.1	163000	153000	<b>7222</b>	*	*	*
	240	50	3	1.1	225000	224000	<b>7322</b>	*	*	*

# Angular contact ball bearings single row

Metric series



Dimensions			Load ratings				Designation	B	BG	BMG
d mm	D	B	r	r1	Dynamic C N	Static Co				
120	215	40	2.1	1.1	165000	163000	<b>7224</b>	*	*	*
	260	55	3	1.1	238000	250000	<b>7324</b>	*	*	*
130	230	40	3	1.1	186000	193000	<b>7226</b>	*	*	*
	280	58	4	1.5	251000	270000	<b>7326</b>	*	*	*
140	250	42	3	1.1	182000	196000	<b>7228</b>	*	*	*
	300	62	4	1.5	276000	310000	<b>7328</b>	*	*	*
150	270	45	3	1.1	195000	224000	<b>7230</b>	*	*	*
	320	65	4	1.5	302000	365000	<b>7330</b>	*	*	*
160	290	48	3	1.1	199000	236000	<b>7232</b>	*	*	*
	340	68	4	1.5	365000	455000	<b>7332</b>	*	*	*
170	310	52	4	1.5	221000	270000	<b>7234</b>	*	*	*
	360	72	4	1.5	358000	455000	<b>7334</b>	*	*	*
180	320	52	4	1.5	251000	320000	<b>7236</b>	*	*	*
	380	75	4	2	371000	490000	<b>7336</b>	*	*	*
190	340	55	4	1.5	276000	355000	<b>7238</b>	*	*	*
	400	78	5	2	410000	560000	<b>7338</b>	*	*	*
200	360	58	4	1.5	324000	423000	<b>7240</b>	*	*	*
	420	80	5	2	474000	658000	<b>7340</b>	*	*	*
220	400	65	4	1.5	319000	465000	<b>7244</b>	*	*	*
240	440	72	4	1.5	364000	540000	<b>7248</b>	*	*	*