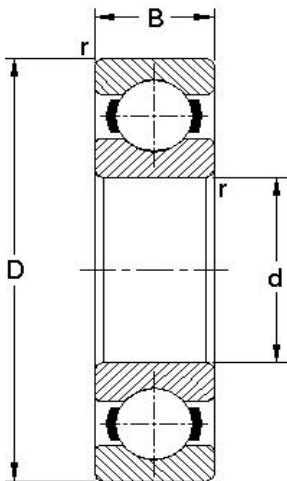


# Deep groove ball bearings single row

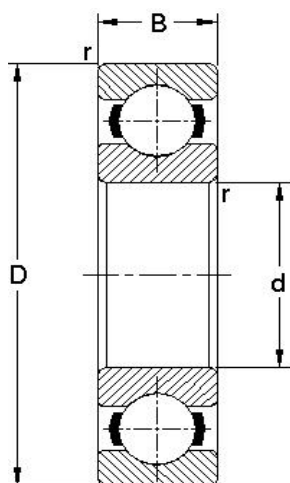
Metric series



Dimensions				Load ratings		Designation								
d	D	B	r	Dynamic C	Static Co		Z	ZZ	RS	2RS	N	ZN	ZZN	M
mm				N										
10	30	9	0.6	5070	2360	<b>6200</b>	*	*	*	*	*	*	*	
	35	11	0.6	8060	3400	<b>6300</b>	*	*	*	*				
12	32	10	0.6	6890	3100	<b>6201</b>	*	*	*	*	*	*	*	
	37	12	1	9750	4150	<b>6301</b>	*	*	*	*				
15	32	9	0.3	5590	2850	<b>6002</b>	*	*	*	*				
	35	11	0.6	7800	3750	<b>6202</b>	*	*	*	*	*	*	*	
	42	13	1	11400	5400	<b>6302</b>	*	*	*	*				
17	35	8	0.3	6050	3250	<b>16003</b>	*	*						
	35	10	0.3	6050	3250	<b>6003</b>	*	*	*	*				
	40	12	0.6	9560	4750	<b>6203</b>	*	*	*	*	*	*	*	
	47	14	1	13500	6550	<b>6303</b>	*	*	*	*	*	*	*	
	62	17	1.1	22900	10800	<b>6403</b>	*	*						
20	37	9	0.3	6370	3650	<b>61904</b>			*	*				
	42	12	0.6	9360	5000	<b>6004</b>	*	*	*	*	*			
	47	14	1	12700	6550	<b>6204</b>	*	*	*	*	*	*	*	
	52	15	1.1	15900	7800	<b>6304</b>	*	*	*	*	*	*	*	
	72	19	1.1	30700	15000	<b>6404</b>	*	*						
25	42	9	0.3	6630	4000	<b>61905</b>			*	*				
	47	8	0.3	7610	4750	<b>16005</b>								
	47	12	0.6	11200	6550	<b>6005</b>	*	*	*	*	*			
	52	15	1	14000	7800	<b>6205</b>	*	*	*	*	*	*	*	
	60	17	1.1	22500	11600	<b>6305</b>	*	*	*	*	*	*	*	
	80	21	1.5	35800	19300	<b>6405</b>	*	*						
30	47	9	0.3	7280	4550	<b>61906</b>			*	*				
	55	9	0.3	11200	7350	<b>16006</b>								
	55	13	1	13300	8300	<b>6006</b>	*	*	*	*	*			
	62	16	1	19500	11200	<b>6206</b>	*	*	*	*	*	*	*	
	72	19	1.1	28100	16000	<b>6306</b>	*	*	*	*	*	*	*	
	90	23	1.5	43600	23600	<b>6406</b>	*	*						
35	55	10	0.6	9560	6200	<b>61907</b>			*	*				*

# Deep groove ball bearings single row

Metric series

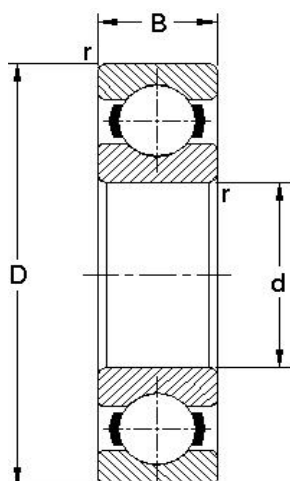


Dimensions d mm	D	B	r	Load ratings		Designation	Z	ZZ	RS	2RS	N	ZN	ZZN	M	K
				Dynamic C	Static Co										
	62	9	0.3	12400	8150	<b>16007</b>									
	62	14	1	15900	10200	<b>6007</b>	*	*	*	*	*				
	72	17	1.1	25500	15300	<b>6207</b>	*	*	*	*	*	*	*	*	
	80	21	1.5	33200	19000	<b>6307</b>	*	*	*	*	*	*	*		
	100	25	1.5	55300	31000	<b>6407</b>	*	*			*				
40	62	12	0.6	13800	9300	<b>61908</b>			*	*					
	68	9	0.3	13300	9150	<b>16008</b>									
	68	15	1	16800	11600	<b>6008</b>	*	*	*	*	*				
	80	18	1.1	30700	19000	<b>6208</b>	*	*	*	*	*	*	*		
	90	23	1.5	41000	24000	<b>6308</b>	*	*	*	*	*	*	*		
	110	27	2	63700	36500	<b>6408</b>	*	*			*				
45	68	12	0.6	10100	6700	<b>61909</b>			*	*					
	75	10	0.6	15600	10800	<b>16009</b>									
	75	16	1	20800	14600	<b>6009</b>	*	*	*	*	*				
	85	19	1.1	33200	21600	<b>6209</b>	*	*	*	*	*	*	*		*
	100	25	1.5	52700	31500	<b>6309</b>	*	*	*	*	*	*	*	*	
	120	29	2	76100	45000	<b>6409</b>	*	*			*	*	*		
50	65	7	0.3	6240	4750	<b>61810</b>			*	*					
	72	12	0.6	14600	10400	<b>61910</b>	*	*	*	*					
	80	10	0.6	16300	11400	<b>16010</b>									
50	80	16	1	21600	16000	<b>6010</b>	*	*	*	*	*	*	*		
	90	20	1.1	35100	23200	<b>6210</b>	*	*	*	*	*	*	*		
	110	27	2	61800	38000	<b>6310</b>	*	*	*	*	*	*	*		
	130	31	2.1	87100	52000	<b>6410</b>	*	*			*				
55	72	9	0.3	8320	6200	<b>61811</b>			*	*					
	80	13	1	15900	11400	<b>61911</b>	*	*	*	*					
	90	11	0.6	19500	14000	<b>16011</b>									
	90	18	1.1	28100	21200	<b>6011</b>	*	*	*	*	*	*	*	*	
	100	21	1.5	43600	29000	<b>6211</b>	*	*	*	*	*	*	*		*
	120	29	2	71500	45000	<b>6311</b>	*	*	*	*	*	*	*		
	140	33	2.1	99500	62000	<b>6411</b>	*	*			*	*	*		



# Deep groove ball bearings single row

Metric series



Dimensions d mm	D	B	r	Load ratings		Designation	Z	ZZ	RS	2RS	N	ZN	ZZN	M	K
				Dynamic C	Static Co										
	125	22	1.1	40000	40000	<b>6016</b>	*	*	*	*	*				
	140	26	2	70200	55000	<b>6216</b>	*	*	*	*	*				
	170	39	2.1	124000	86500	<b>6316</b>	*	*	*	*					
	200	48	3	16300	125000	<b>6416</b>	*	*							
85	110	13	1	19500	16600	<b>61817</b>			*	*					
	130	14	0.6	33800	33500	<b>16017</b>									
	130	22	1.1	49400	43000	<b>6017</b>	*	*	*	*	*				
	150	28	2	83200	64000	<b>6217</b>	*	*	*	*	*				
	180	41	3	133000	96500	<b>6317</b>	*	*	*	*					
	210	52	4	174000	137000	<b>6417</b>	*	*							
90	115	13	1	19500	17000	<b>61818</b>			*	*				*	
	125	18	1.1	33200	31500	<b>61918</b>			*	*				*	
	140	16	1	41600	39000	<b>16018</b>									
90	140	24	1.5	58500	50000	<b>6018</b>	*	*	*	*	*			*	
	160	30	2	95600	73500	<b>6218</b>	*	*	*	*	*				
	190	43	3	143000	108000	<b>6318</b>	*	*	*	*					
	225	54	4	186000	150000	<b>6418</b>	*	*							
95	120	13	1	19900	17600	<b>61819</b>			*	*					
	130	18	1.1	33800	33500	<b>61919</b>									
	145	16	1	42300	41500	<b>16019</b>									
	145	24	1.5	60500	54000	<b>6019</b>	*	*	*	*					
	170	32	2.1	108000	81500	<b>6219</b>	*	*	*	*	*				
	200	45	3	153000	118000	<b>6319</b>	*	*							
100	125	13	1	19900	18300	<b>61820</b>			*	*					
	140	20	1.1	42300	41500	<b>61920</b>									
	150	16	1	44200	44000	<b>16020</b>									
	150	24	1.5	60500	54000	<b>6020</b>	*	*	*	*	*				
	180	34	2.1	124000	93000	<b>6220</b>	*	*	*	*	*				
	215	47	3	174000	140000	<b>6320</b>	*	*							
105	130	13	1	20800	19600	<b>61821</b>			*	*					











